

Precision Crafted Elegance: The Shieldon JXHL-OTF02 OEM OTF Pocket Knife

The art of crafting an exceptional pocket knife balances form, function, and the finesse of fine materials. At Shieldon, this delicate equilibrium is achieved with the JXHL-OTF02 [OEM OTF Pocket Knife](#), a masterpiece designed for the discerning user who values reliability and elegance in their cutting tool. This procurement description will provide a comprehensive overview of the JXHL-OTF02, detailing every aspect that makes it a standout item in Shieldon's Manufacturing & Trading Combo business.





Product Overview

- **Product Name:** OEM OTF Pocket Knife JXHL-OTF02
- **Item Number:** JXHL-OTF02
- **Item Segment:** O.T.F. (Out-The-Front)

Blade Specifications



- **Material:** 420-grade stainless steel, renowned for its strength, corrosion resistance, and ease of sharpening.
- **Hardness (HRC):** Rated at 32-34 HRC, providing a good balance of blade toughness and edge retention.
- **Thickness:** 2mm/0.079", offering a sturdy cross-section for a variety of cutting tasks.
- **Length:** 58mm/2.28", an ideal length for precision work while maintaining compactness.
- **Style:** Spear point, for a versatile cutting and piercing experience.
- **Finish:** Blackened, for a sleek appearance and reduced glare.
- **Grind:** Flat grind, for ease of sharpening and maintenance.

Handle Specifications

- **Material:** Aluminum alloy, selected for its lightweight properties and durability.
- **Color:** Silvery, lending the knife a classic and professional look.
- **Pocket Clip:** Tip-down configuration for secure carrying and quick access.

Mechanism

- **Open Way:** Thumb slide, engineered for smooth and rapid one-handed blade deployment.
- **Total Length:** 138mm/5.43", providing a comfortable grip and control over the blade.
- **Weight:** 58g/2.05 oz, yielding a lightweight yet balanced instrument.

Ordering Information

- **ODM Regular Minimum Order Quantity (MOQ):** 10 units, making it accessible for small-scale procurement and boutique orders.





Product Detailing

Blade Excellence The JXHL-OTF02's blade is constructed from 420-grade stainless steel, a material choice stemming from an uncompromising pursuit of quality. The hardness is finely tuned to a 32-34 HRC, which ensures a blade that maintains sharpness over repeated use without becoming brittle. The spear point blade style is meticulously designed to be a jack-of-all-trades, excelling in both stabbing and slicing tasks.

Handle Elegance The handle of the JXHL-OTF02 is as much a piece of art as it is a functional tool. Crafted from high-quality aluminum alloy, it boasts a natural resilience to the elements whilst remaining lightweight. The silvery color offers a timeless appeal, ensuring that it looks as good in a collector's display as it does in practical use.

User-Centric Design Every aspect of the JXHL-OTF02 has been conceived with the user in mind. The thumb slide mechanism allows for swift and smooth blade deployment, critical in situations where time is of the essence. The addition of a tip-down pocket clip guarantees that the knife is always within reach, secure in your pocket and ready to be drawn at a moment's notice.

Procurement Advantage

Choosing the Sheldon JXHL-OTF02 for your procurement needs offers several distinct advantages:

Quality Assurance As part of Sheldon's Manufacturing & Trading Combo, the JXHL-OTF02 is subject to rigorous quality control processes that ensure each knife meets the highest standards before reaching the client. This commitment to quality extends from the selection of raw materials to the precision of the manufacturing process.

Customization Potential Sheldon's expertise in both manufacturing and trading allows for a high degree of customization for bulk orders. With the JXHL-OTF02 serving as a base model,



elements such as the handle color, blade finish, or even the blade material can be adjusted to fit the unique branding needs of your business.

Flexible Ordering Understanding the diverse needs of the market, Shieldon offers an approachable MOQ of 10 units for the JXHL-OTF02, making this premium knife accessible for specialized markets or exclusive product lines.

Strategic Partnership Partnering with Shieldon not only means acquiring a superior product but also tapping into a wealth of industry knowledge and customer service that can elevate your business's procurement strategy.

Market Positioning

The JXHL-OTF02 positions itself as a premium option in the O.T.F. knife segment. Its combination of high-quality materials, advanced opening mechanism, and balanced ergonomics place it above conventional offerings. Ideal for both everyday carry enthusiasts and knife collectors, it resonates with a market that appreciates superior craftsmanship and performance.



Ideal Use Cases

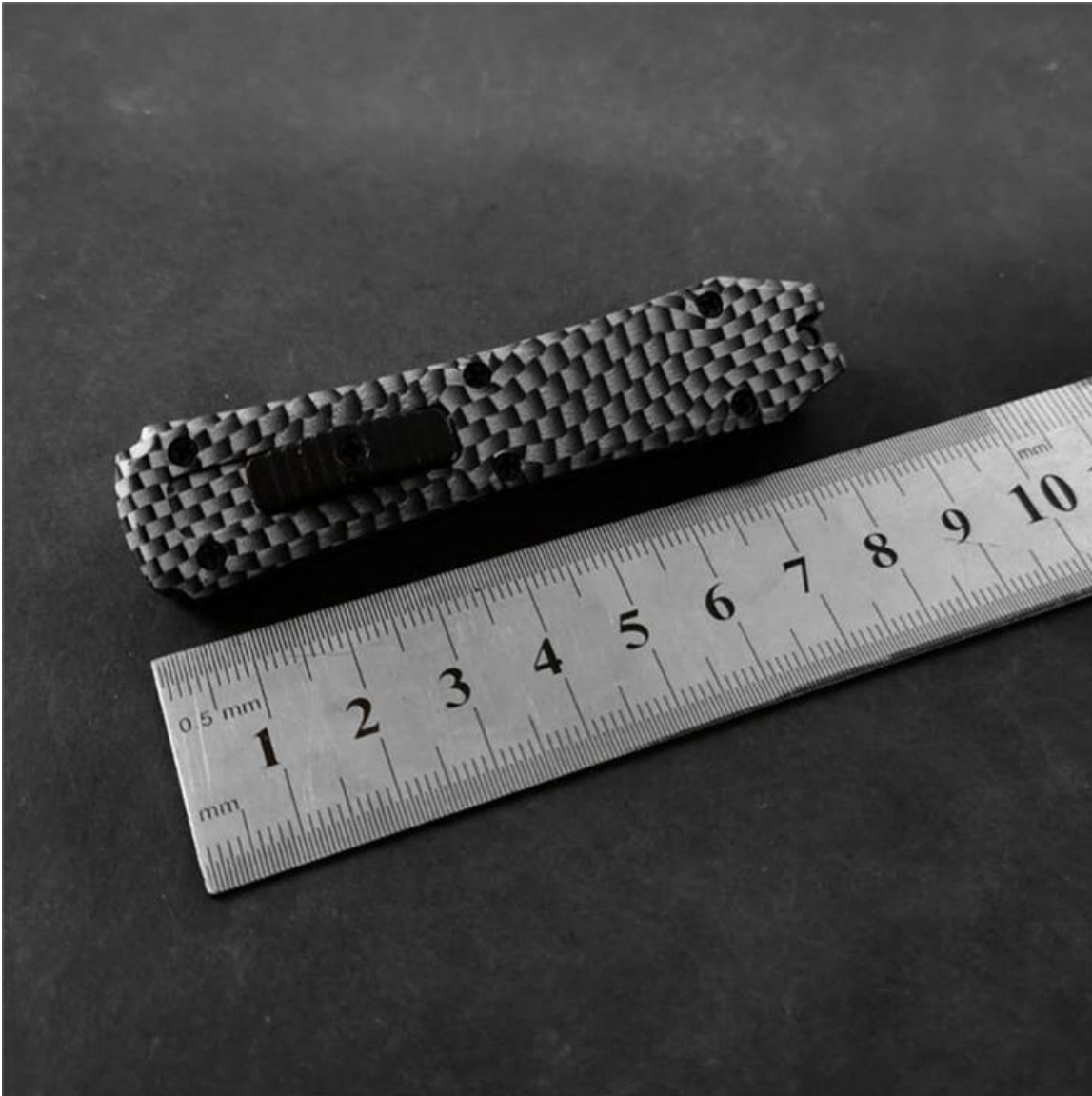
- **Everyday Carry (EDC):** The lightweight and robust design makes it a perfect companion for daily tasks and challenges.
- **Tactical Use:** Rapid deployment and reliable performance serve the needs of law enforcement and military personnel.
- **Outdoor Activities:** Its hardiness and ease of use make it a preferred choice for hikers, campers, and survivalists.
- **Collecting:** Aesthetically pleasing design and high-quality build make it a desirable addition to knife collections.

Conclusion

Procuring the OEM OTF Pocket Knife JXHL-OTF02 from Sheldon means investing in a product that harmonizes superior materials, advanced design, and exceptional craftsmanship. With its versatile blade, durable handle, and innovative opening mechanism, this knife stands as a testament to what a well-conceived and executed cutting tool can be. Whether for resale, corporate gifting, or expanding an exclusive product line, the JXHL-OTF02 is a purchase that reflects an understanding of quality and a promise of performance. Choose Sheldon's JXHL-OTF02 for a procurement decision that cuts above the rest.

The Versatile World of O.T.F. Knives: Applications and Scenarios

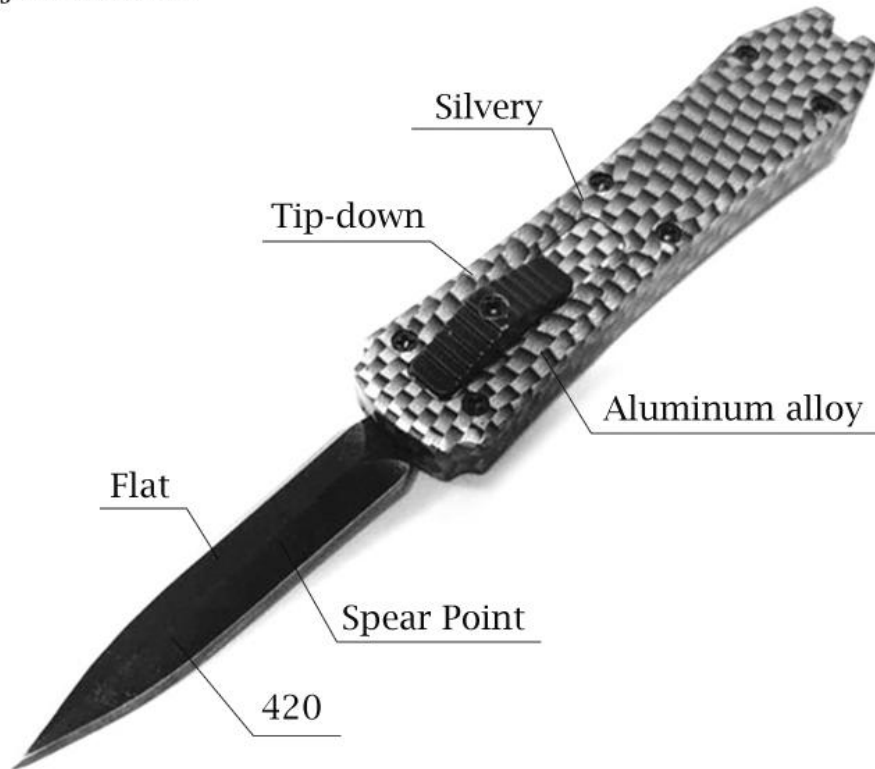
Out-The-Front (O.T.F.) knives, identified by their distinctive blade deployment mechanism, cater to a wide range of applications, seamlessly blending functionality with swift action. This guide will impart basic knowledge about O.T.F. knives and explore the various settings where they excel.



What is an O.T.F. Knife? An O.T.F. knife is a type of pocketknife or switchblade with a blade that extends and retracts from the front end of the handle. Two main types exist: single-action, which automatically deploys the blade but requires manual retraction, and double-action, which automates both extending and retracting the blade. The innovation of the O.T.F. design lies in its ease of use—typically allowing for rapid one-handed operation, a feature that makes it particularly useful across various scenarios.

Application Scenarios for O.T.F. Knives:

- 1. Everyday Practicality:** For the everyday user, an O.T.F. knife is a practical tool for quick, one-handed operations. Whether it's opening packages, cutting through zip ties, or trimming threads, the seamless extension and retraction mechanism of an O.T.F. knife make it a convenient choice for daily tasks.
- 2. Emergency Situations:** In emergency response scenarios, the ability to deploy a knife quickly with one hand can be crucial. O.T.F. knives are beneficial for first responders, firefighters, and paramedics who may need to cut away clothing, seat belts, or obstructions while stabilizing a patient with the other hand.
- 3. Tactical Use:** The military and law enforcement officers often employ O.T.F. knives due to their quick deployment and ease of use in pressurized situations. Whether it's for self-defense, cutting ropes, or other field duties, the reliability of an O.T.F. knife under stress makes it an essential part of tactical gear.
- 4. Outdoor Adventure:** O.T.F. knives are ideal for outdoor enthusiasts engaging in activities like camping, hiking, or fishing. The efficient one-handed operation allows adventurers to maintain focus and stability when performing tasks such as preparing food, creating kindling for fires, or cutting fishing line, all while managing other equipment or holding materials.
- 5. Professional Tasks:** For tradespeople and craftspeople, an O.T.F. knife can be a time-saving device. It allows users to quickly switch between tasks without needing to put the tool away. This feature is particularly advantageous for jobs requiring both hands, like measuring and marking materials before a cut.
- 6. Collecting and Hobbyists:** Knife collecting is a passion for many, and O.T.F. knives, with their intricate mechanics and diverse designs, are often highly sought after. Collectors and hobbyists prize O.T.F. knives for their mechanical precision, aesthetic variety, and historical significance, as well as the skill required to design and manufacture them.
- 7. Self-Defense:** While self-defense should be approached with caution and awareness of laws and regulations, O.T.F. knives can be carried for protection in jurisdictions where it's legal to do so. Their quick deployment can provide a sense of security in self-defense scenarios, but it's important to seek proper training and understand the legal implications of carrying and using a knife for this purpose.

O.T.F. Knife
JXHL-OTF02

Safety and Legal Considerations: While O.T.F. knives are useful, they come with responsibilities. Users must be mindful of safety, ensuring the blade is securely locked when not in use. Furthermore, due to the automatic nature of O.T.F. knives, they are subject to legal restrictions in some areas. Always check local laws before purchasing, carrying, or using an O.T.F. knife.

In conclusion, [O.T.F. knives](#) are versatile tools that can fit into many aspects of daily life and specialized activities. Whether for practical everyday use, tactical operations, emergency

services, outdoor adventures, professional tasks, or collecting, these knives offer a unique combination of convenience, speed, and reliability. Understanding the scenarios in which O.T.F. knives can be effectively utilized allows for their responsible and beneficial application in both routine and specialized tasks.